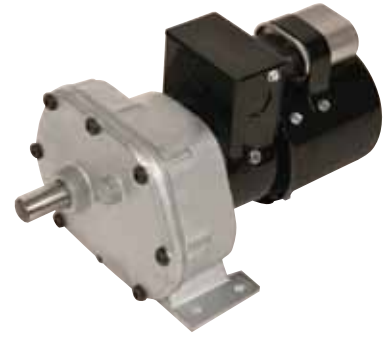


# VWDIR84 AC

115/230V PSC TEFC AC DESIGN

Our VWDIR84 offers up to 600 in-lbs of torque.



AC PARALLEL  
SHAFT  
GEARMOTORS

## Specifications

Gearhead		Motor	Features
Gearing:	Phenolic high speed and hardened steel	Motor Type: Permanent split capacitor	Units comply with applicable UL & CSA standards
Housing:	Precision machined die cast zinc	Rotation: Reversible	
Lubrication:	Grease	Bearings: Ball	<b>Optional Features</b>
Bearings:	Porous bronze sleeve	Insulation: Class B minimum	Power off brake see pages 86-87
Shafts:	Hardened steel	Enclosure: TEFC	<b>Additional Information</b>
Mounting:	All positions		
Finish:	Unpainted	Capacitor included	

## VWDIR84 PSC 115V/230V

Model #	Speed (RPM)	Torque (in-lbs)	Input HP	Gear Ratio	Stages	OHL	Amps	Hz	Shipping Wt.
016Q107-0081	20	250	1/12	81	3	250	1.2/.63	60/50	17
016Q107-0134	12	400	1/12	135	3	250	1.2/.63	60/50	17
016Q107-0267	6	600	1/12	267	3	250	1.2/.63	60/50	17.5

All ratings are shown at 60Hz operation. Also operable at 50Hz at 5/6 of the rated speed.

## VWDIR84 AC

